

Other

1. Gelly rollers
2. Good quality watercolour pencils
3. Good quality graphite pencils
4. Sparkling H2O's
5. Walnut ink
6. Portable paper cutter
7. Portable light table
8. See thru Grid ruler (like quilters use.)

Other Writing Tools

- a. Various fountain pens with a chisel cut nib. (Paint Spot & Stylus)
- b. Glass pens. Not flexible but beautiful!
- c. Holders ...basic plastic to hand carved.
- d. Oblique holder for pointed nibs
- e. Pentel Pocket brush (black)
- f. Pentel Brush (ink in handle, all colours)
- g. Aquabrush (water in handle)
- h. Watercolour brushes: regular pointed or chisel: (DaVinci, Tombow, Koi, Ecoline, Fudenosuke brush markers)
- i. White and Metallics: Uni-Ball Signo
- j. Calligraphy Markers: Staedtler, Pentalic, Zig, Speedball.



In the Beginning



ECS

<http://edmontoncalligraphicsociety.ca/>

Table of Contents

Table of Contents, Basics.....	1
Papers.....	2
Broad Edge Nib Examples.....	3
Pointed Pen Nibs, Inks.....	4
Paints, For Projects.....	5
Local Retailers.....	6
Other.....	7

Basics

- Pencils (1 regular, 1 mechanical)
- Pencil - 1 square edged mechanical



- Eraser (one white & one kneadable)
- T-Square (plastic for drawing lines)
- Metal Ruler with cork backing.
- Small jar for water.
- Plastic tray with lid for watercolours or gouache.
- Lidded ice cube trays work well. Squeeze a small amount into each section and allow to air dry.
- Use a wet brush to make liquid to load your nib.
- If you are new to watercolours or gouache, it is definitely worth paying the extra for Artists' grade.

Local Retailers

The Paint Spot

10032 81 Ave NW, Edmonton (ECS member discounts)

Expressions and Images Custom Framing

5613 Gateway Boulevard, Edmonton

Delta Art and Drafting Supplies

11116 120 St. NW, Edmonton

Colours Art Supplies and Framing

10104 149 Street, Edmonton

Stylus Fine Pens + Desk Accessories Inc

10538 102 Ave NW, Edmonton

DeSerres

West Edmonton Mall, 8882 170 Street NW #1948

WATER COLOUR

- Winsor & Newton, Holbein and Schminke are an Artists' Grade. Cotman is a student grade watercolour.
- Warm: Cadmium Red, Cadmium Yellow, Phthalo or Winsor Blue
- Cool: Alizarin Red, Lemon Yellow, Ultramarine blue
- using watercolour – best to have the colour squeezed into the pan and left to dry – it turns out to be more economical in the long run
- use distilled water to thin or moisten

Gouache

- like a watercolour but opaque. Winsor & Newton, Holbein and Schminke brands are Artists' Grade.
- Warm: Cadmium Red, Cadmium Yellow, Phthalo or Winsor Blue
- Cool: Alizarin Red, Lemon Yellow, Ultramarine blue
- Winsor & Newton is an Artists' Grade.
- Can be used in calligraphy
- Opacity can be varied by the addition of distilled water

Acrylics

- Acrylics require rigorous nib cleaning.
- Acrylic paints & inks can be thinned as well – while they are still wet.
- Once dry they cannot be made wet again. They are a form of plastic & are permanent.

Papers

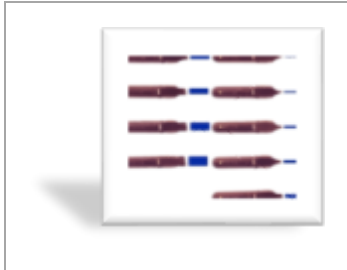
- a. Graph, Ruled, Dot pads (highest quality, these are usually at a higher price point and worth it.) Ex. Rhodia
- b. Marker pads (translucent, so a liner can be used)
- c. Sketch Books (for pen and ink)
- d. Layout Bond paper pads up to 11x17 inches. ECS stocks these.
- e. Water colour paper (large 22x30 inches)

White/Cream Papers for Calligraphy Projects

- **Borden & Riley, Stonehenge**
- **Arches Text Wove** (takes watercolour on both sides. Takes abuse - good for paste paper, watercolour, and books.) Creamy in colour.
- **Arches 90# or 140#** Hot Press is very smooth and gives a sharp even edge to letters, Cold Press has a slight texture and Rough is rough.
- **Canson Mi-Tientes** - comes in about 30 colors
- **En tout Cas** – by Arches – hot pressed on one side and cold on the other (creamy in colour).
- **Clarefontaine, Strathmore**
- **Hahnemuhle** (German Ingres) – 100 % alpha cellulose. Text weight. Laid finish. Popular with German scribes.
- **Bugra** – 100 % Alpha Cellulose, Laid finish. 130gsm. White. A thicker pronounced laid finish paper. Mouldmade. Popular with calligraphers. White

Broad Edge Nibs

Brause Nib



Oblique cut, high quality nibs from Germany. Stiffer nibs with reservoir on top. (With a bit of effort, the reservoir is also removable.) If you have a heavy hand, these will work well. Left-handed available.

Mitchell



Flexible nibs with sharp edges. **purchase the small triangular reservoirs that fit on the underside of the nibs. May also be used without reservoir. **

Speedball C



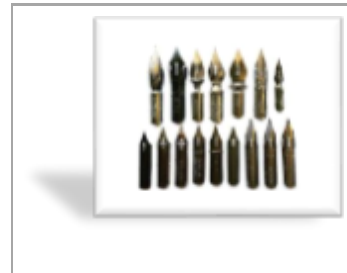
Speedball C series (can get nibs & pen holder in a set or individually, C2 is the most used nib in the C series.)

Pilot Parallel Pens



Pilot Parallel pens...6.0 & 3.8 work best.

Pointed Pen Nibs



Brause, EF, Rose, Nikko G, & Blue Pumpkin.

Mapping and drawing nibs will give you some success.

Inks

AVOID waterproof ink. It will CLOG your pen.

Recommended Inks:



Higgins ETERNAL,
Pelikan 4001,
Ecoline, Dr. Martins
Hydra,
Moon Palace Sumi...very
black but flows well.



Dr. Martin's Bleedproof White is a water dilutable paste. When dry this ink becomes waterproof and allows other inks to be coated over it. It can also have other inks dropped into it (while still wet) for special effects.